



SimElite Solutions FSTrackers

SimElite Solutions

FSTrackers

Flight Simulator Tracking System

Document version: V1.0.3



What is FSTrackers?	Page 3
FSTrackers Application	Page 3
FSTrackers Website	Page 6
Update “aircraft.cfg” file for better result	Page 11
Use Flight plan for better result	Page 11

What is FSTrackers?

FSTrackers is a flight simulator tracking system help flight simulator lovers to track their own or others flights in a website. It has a small client program which must be run on user's computer and it will collect necessary data and transmit them to the FSTrackers server also there is a website (<https://fstrackers.com>) which will show all flights in LIVE and Historic modes.

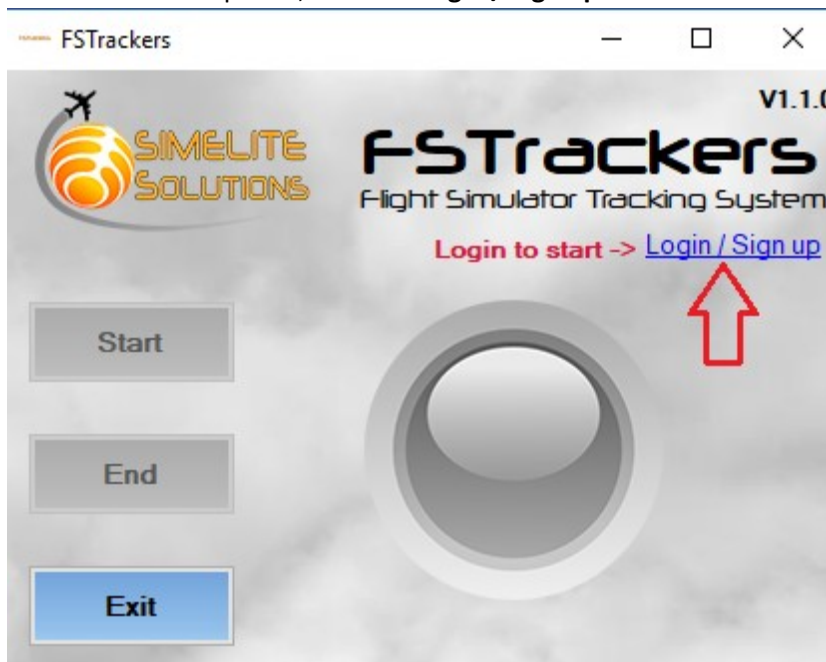
FSTrackers is working with these flight simulators:

FSX, FSX STEAM, Prepar3D (V1 to V4) and it uses SimConnect technology.

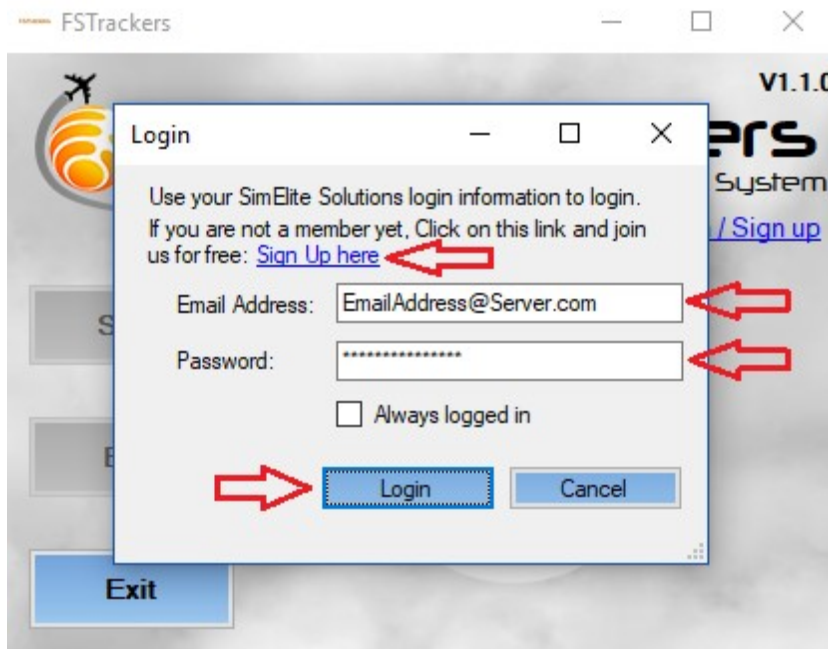
1- FSTrackers application:

For using FSTrackers application, please follow these steps:

- 1- If you have only one computer for your flight simulator, copy "FSTrackers" folder to your flight simulator computer (wherever you like) and make a shortcut of 'FSTrackers.exe' to your desktop.
- 2- If you have one main computer for your flight simulator and another client computer for running some related flight simulator applications (for example weather programs, Radar programs,...) and it is already configured to run SimConnect applications over network then you can copy FSTrackers folder either in your main simulator computer **OR** your client computer but we recommend to copy FSTrackers to your client computer beside other addons.
- 3- Run "FSTrackers.exe"
- 4- If the Dot Net Framework 4.5.2 isn't installed on your windows ([Windows 10 has this version and you don't need to install that](#)), go to "dot net 4.5.2 installer" folder and install Microsoft's "NDP452-KB2901954-Web.exe" first.
- 5- After FSTrackers opened, click on "**Login / Sign up**" link:



- 6- If you have a SimElite Solutions account, you can use it to login to FSTrackers but if you don't have an account you can use **"Sign up here"** link to make a new account. If you check **"Always logged in"** checkbox it won't be needed to login the next time you open this application.



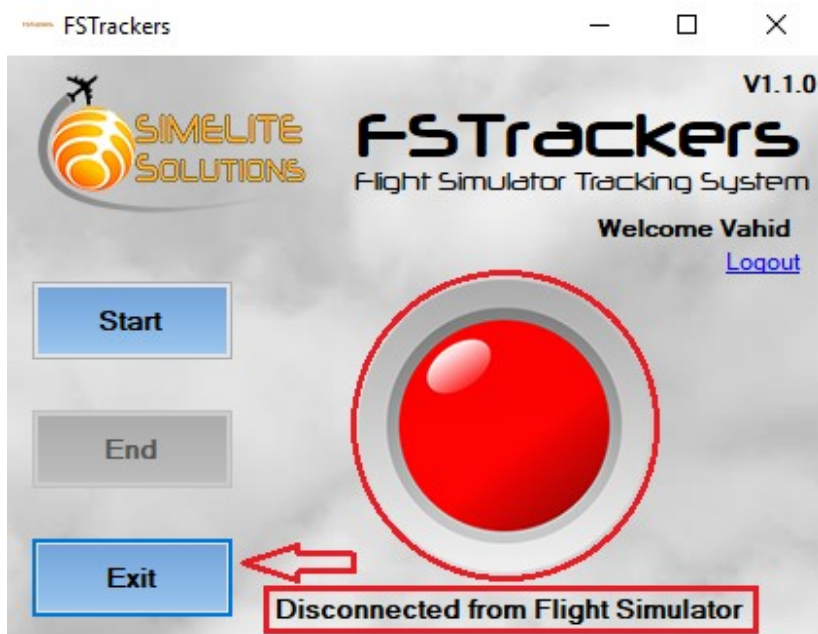
- 7- After login your name will be shown on welcome message and the center LED turns to Orange. Start your flight simulator and do all before flight checklists and just before pushback, click on **"Start"** button to start sending your flight data to the server.



- 8- When you clicked on **“Start”** button in step 7, FSTrackers client connects to both your flight simulator and FSTrackers server and it starts to send your flight data to the server. At this time you can go to <https://www.fstrackers.com> and you can see your flight on the map. You can read more about how to use FSTrackers website on the next section (Page6). After you landed at arrival airport and went to your arrival gate and turned off your engines, return back to FSTrackers client program and just click on **“End”** button.



The center LED turns to red and you will be disconnected both from flight simulator and FSTrackers Server.



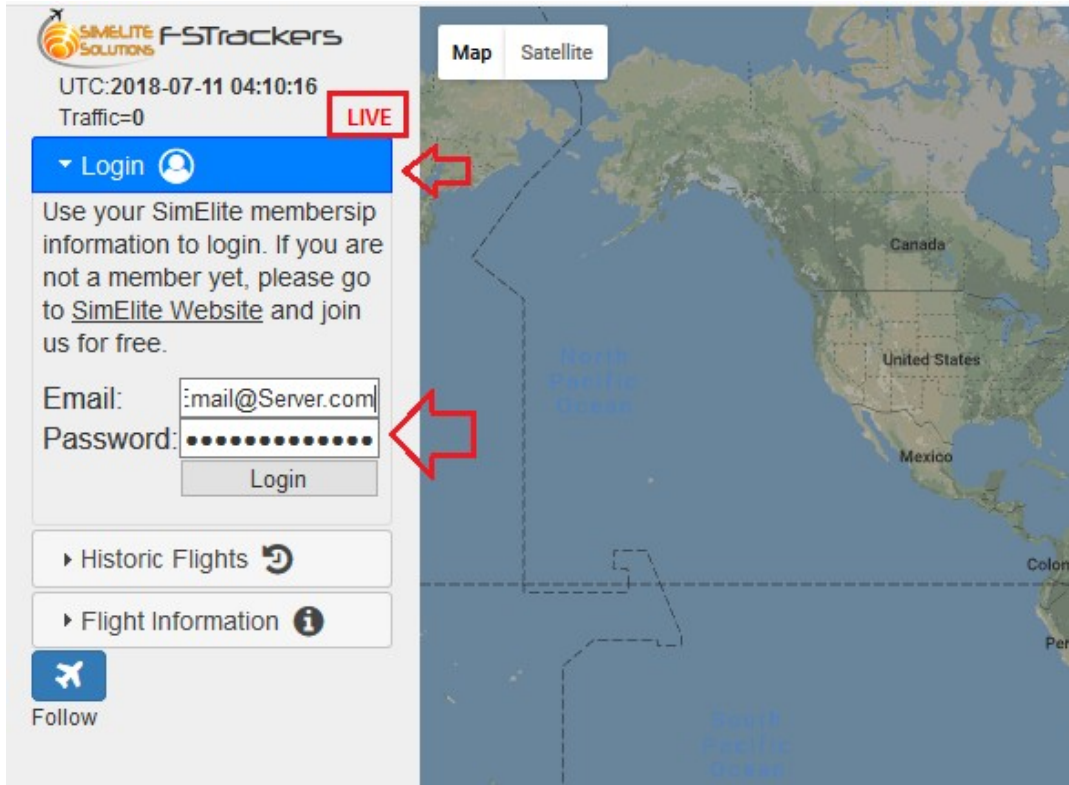
- 9- Now you can click on **“Exit”** button to exit FSTrackers client.

2- FSTrackers Website:

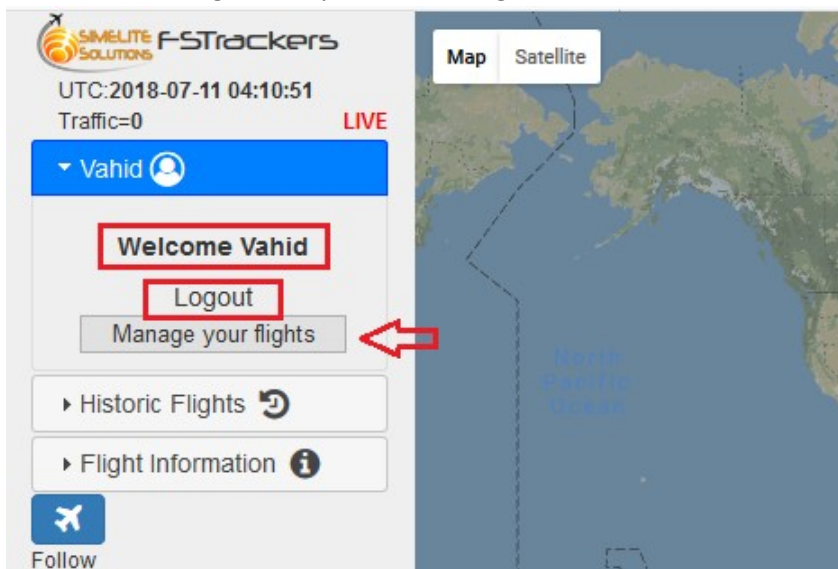
You can track your own flights in FSTrackers website.

Go to <https://www.fstrackers.com> website.

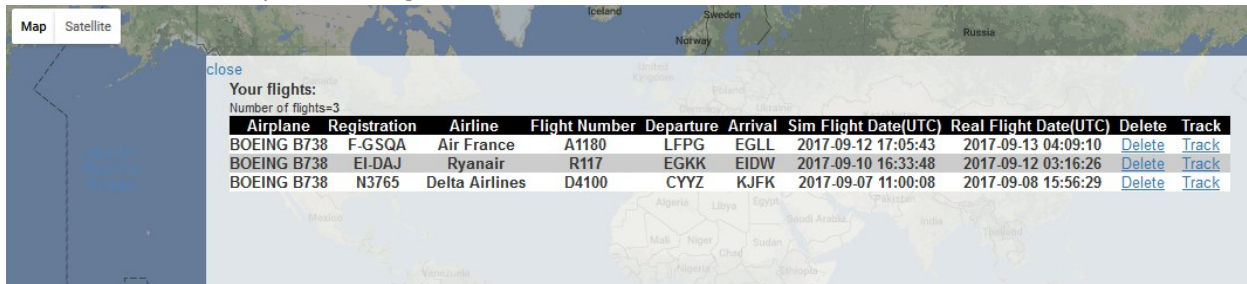
- The **LIVE** indicates it is working in Live mode and it is showing live traffic from users' flight simulators.
- Click on "Login" and like FSTrackers client program, use your SimElite account information for login.



- After login your name will be shown and there will be a button you can use to access your own flights and you can also logout with a link:



- When you click on “Manage your flight” button, all of your flights will be shown on page. You can track your historic flights and also if there was a problem in your flight for example unfinished flights due to technical problems (simulator blue screen/ crash during flight) you can delete your own flights:



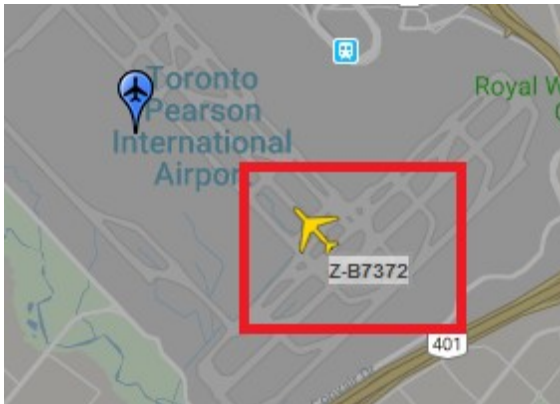
Map Satellite

close

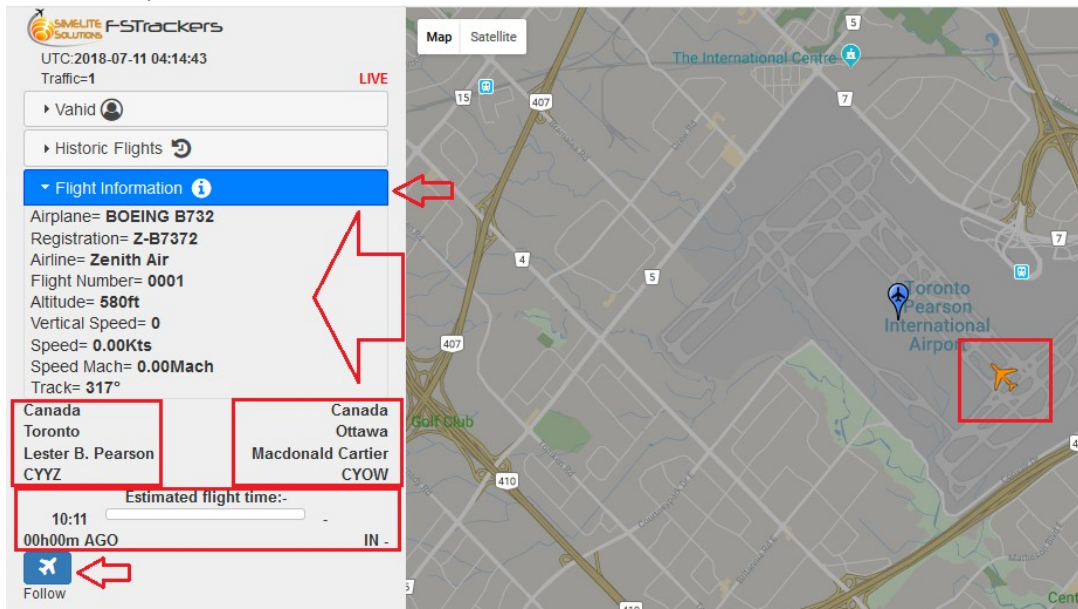
Your flights:
Number of flights=3

Airplane	Registration	Airline	Flight Number	Departure	Arrival	Sim Flight Date(UTC)	Real Flight Date(UTC)	Delete	Track
BOEING B738	F-GSQA	Air France	A1180	LFPG	EGLL	2017-09-12 17:05:43	2017-09-13 04:09:10	Delete	Track
BOEING B738	EI-DAJ	Ryanair	R117	EGKK	EIDW	2017-09-10 16:33:48	2017-09-12 03:16:26	Delete	Track
BOEING B738	N3765	Delta Airlines	D4100	CYYZ	KJFK	2017-09-07 11:00:08	2017-09-08 15:56:29	Delete	Track

- If there is any live traffic, the plane icon will be appearing on the map:



- If you click on any **airplane icon** on the map, its color will be changed from yellow to orange and detailed flight information will be shown on the left section. You have departure airport, Arrival airport, Flight duration information. With “**Follow Airplane**” button you can define to follow your tracking airplane (map moves with your airplane) or not (map will be fixed and your airplane move on the map)



SimElite Solutions FSTrackers

UTC:2018-07-11 04:14:43
Traffic=1

LIVE

Vahid

Historic Flights

Flight Information

Airplane= BOEING B732
Registration= Z-B7372
Airline= Zenith Air
Flight Number= 0001
Altitude= 580ft
Vertical Speed= 0
Speed= 0.00Kts
Speed Mach= 0.00Mach
Track= 317°

Canada Toronto Lester B. Pearson CYYZ

Canada Ottawa Macdonald Cartier CYOW

Estimated flight time:-
10:11
00h00m AGO IN -

Follow

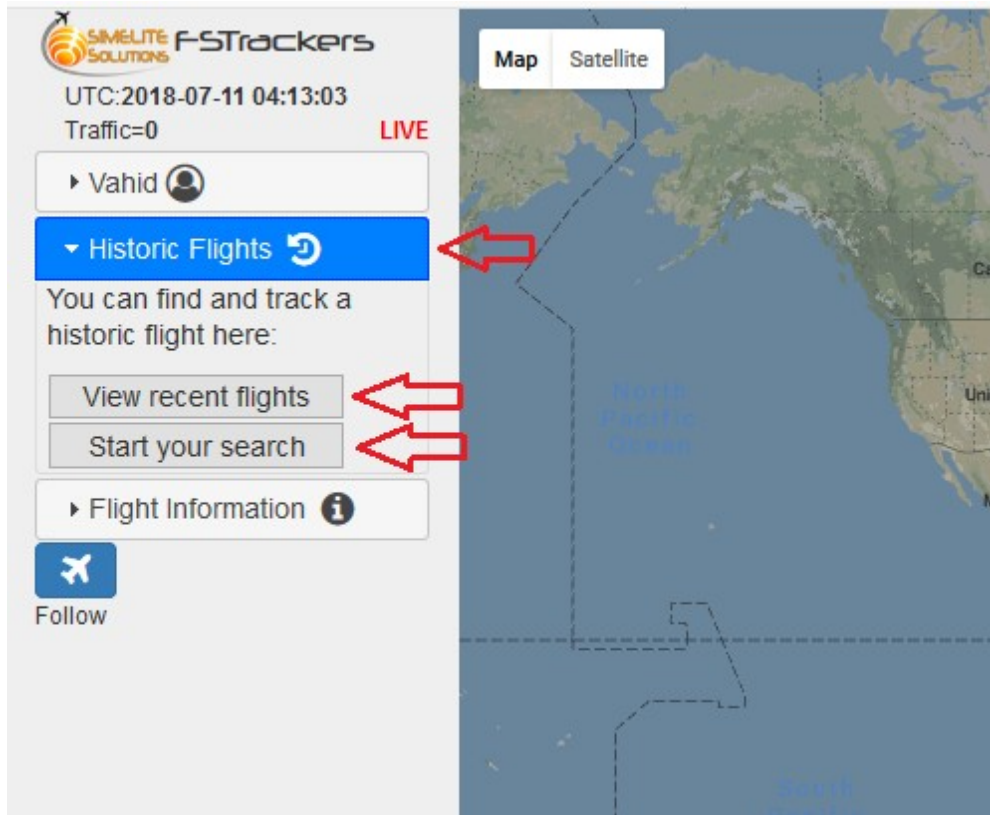
Map Satellite

The International Centre

Toronto Pearson International Airport

Historic Flights:

- You can search and track historic flights (old flights those finished before) with “**Historic Flights**” tab:



- If you use “**View recent flights**” button, it will show you the most recent flights.

close

Search result:
Number of Flights=1

Airplane	Registration	Airline	Flight Number	Departure	Arrival	Sim Flight Date(UTC)	Real Flight Date(UTC)	Track	Flight Plan
BOEING B732	Z-B7372	Zenith Air	0001	CYYZ	CYOW	2018-07-10 14:41:06	2018-07-11 17:52:17	Track	FSXP3D PMDG

↑ A ↑ B ↑ C

In this window, you can see the most recent flights and you can click on “**Track**” link to start tracking that specific flight.

If user already has done its flights from departure to arrival airport, the flight plan related to that complete flight will be available to download for other users. At the moment two types of flight plan is available to download: 1- FSX/P3D compatible (B) 2- PMDG compatible (C) flight plans.

- When you click on “**Start your search**” button on Historic Flights section, a search form will be shown.

If you don’t enter any search item and click on search button, it will return 30 most recent flights but if you want to find a specific flight, you can use search fields and entering any word or any part of a word, can help you find what you are looking for



- After clicking on “Search” button, the search result will be shown:

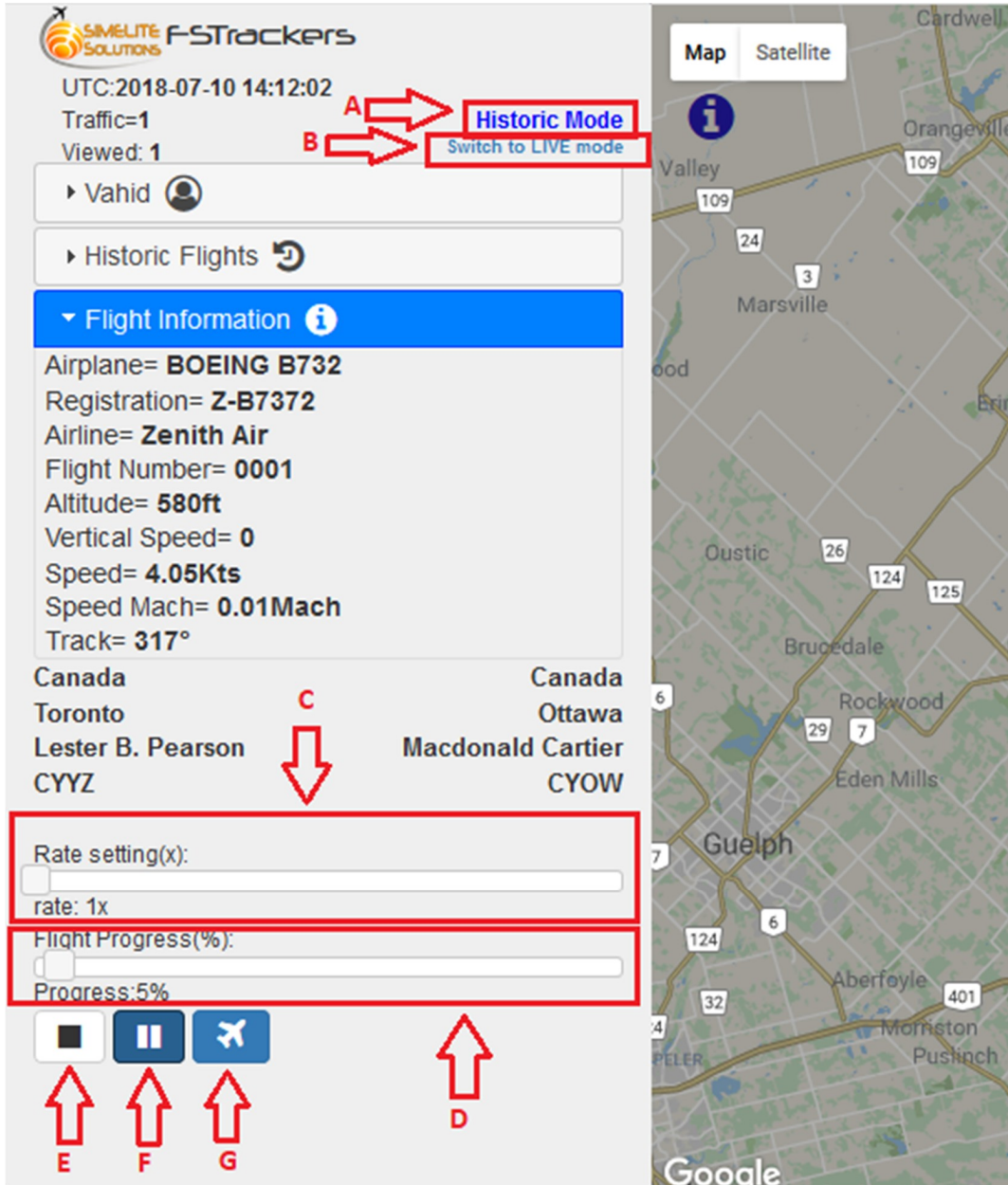
close

Search result:
Number of Flights=1

Airplane	Registration	Airline	Flight Number	Departure	Arrival	Sim Flight Date(UTC)	Real Flight Date(UTC)	Track	Flight Plan
BOEING B732	Z-B7372	Zenith Air	0001	CYYZ	CYOW	2018-07-10 14:41:06	2018-07-11 17:52:17	Track	FSX/P3D PMDG


↑ A ↑ B ↑ C


- If you click on “**Track**” link for one flight from the search result table, it will switch to the “**historic mode**” and the selected flight will be tracked.




FSTrackers

UTC:2018-07-10 14:12:02
Traffic=1
Viewed: 1

▶ Vahid 

▶ Historic Flights 

▼ Flight Information 




Airplane= **BOEING B732**
Registration= **Z-B7372**
Airline= **Zenith Air**
Flight Number= **0001**
Altitude= **580ft**
Vertical Speed= **0**
Speed= **4.05Kts**
Speed Mach= **0.01Mach**
Track= **317°**

Canada
Toronto
Lester B. Pearson
CYYZ

Canada
Ottawa
Macdonald Cartier
CYOW

Rate setting(x):
 rate: 1x

Flight Progress(%):
 Progress:5%

E **F** **G**

A **B** **C** **D**

Historic Mode
Switch to LIVE mode

Map Satellite


Valley
109
24
3
Marsville
Oustic
26
124
125
Bruce Dale
Rockwood
29
7
Eden Mills
Guelph
124
6
32
401
Aberfoyle
Morrison
Puslinch
Google

There are these sections in Historic Mode:

- A- Historic Mode indicator
- B- Click on “Switch to LIVE mode” will switch back to LIVE mode.
- C- Playback rate which can be set from 1x (real time) to 50x (fastest mode).
- D- Flight progress which be set from 0% (start point) to 100% (end point).
- E- Stop button, flight tracking will be ended and it will go to start point.
- F- Pause/Play button, It will pause/play tracking a flight
- G- Follow airplane, just like Live mode it defines how map moves or stop moving with airplane.

3- Update “aircraft.cfg” file for better result:

If you add/update some information inside your “aircraft.cfg” file, they will appear on your flight data panel inside FSTrackers LIVE/Historic mode.



```
[fltsim.2]
title=Boeing 737-836NGX British Airways Virtual
Winglets
sim=B737-800WL
model=
panel=
sound=
texture=BA
kb_checklists=Boeing737-800_check
kb_reference=Boeing737-800_ref
atc_airline=SPEED BIRD Airline name
atc_id=G-VABA Registration
atc_flight_number=1544 Flight number
atc_model=737-800
atc_parking_types=GATE,RAMP
atc_type=BOEING
ui_createdby=PMDG
ui_manufacturer=Boeing
ui_type=737-800NGX
ui_typerole=737-800
ui_variation=British Airways Virtual Winglets
airline_name=British Airways Virtual
description=Boeing 737-800 powered by CFM engines v
1.0\nPMDG Simulations\nwww.precisionmanuals.com \n
\nProduced under license from Boeing Management
Company.\n\nBoeing 737, 737-800, 737-900 & Boeing
are among the trademarks owned by Boeing.
visual_damage=0
```

4- Use flight plan for better result:

If you use and load flight plan for your flights, those departure airport, arrival airport and flight duration section with departure time and estimation of arrival time will be available on flight data panel and you can enjoy the full information you need for tracking your flights.